



CERTIFICATE
NR 1051-01-OA-01-2019-A
OF PRODUCT COMPLIANCE
WITH REQUIREMENTS OF STRENGTH
AND SAFETY

It is stated that according to the results of executed tests

kitchen hanger STRONG ZK-STRONG-L1, ZK-STRONG-P1

distributed by

GTV

ul. Przejazdowa 21, 05-800 Pruszków, Polska

characterized by a loading capacity (M) of 65 kg (with respect to one wall attachment device) meet the requirements of:

EN 15939:2011+A1:2014 Hardware for furniture – Strength and loading capacity of wall attachment devices

Tests were executed: 04.01.2019-14.01.2019 r.

The Certificate contains test report /2 page/, which is an integral part of the Certificate.

**Engineering Centre For Creating
Product Quality „ATEST” Ltd
ul. Bogusławskiego 16, 60-214 Poznań
tel. 61 - 8 652 689
Laboratory in Gruszczyń / Poznań
ul. Leśna 12 62-006 Kobylnica**

Signed for and on behalf
“ATEST” Ltd”

DIRECTOR

mgr inż. Lucjan Kókorniak



Poznań, 15.01.2019 r.



Test report number 1051-01-OA-01-2019-A

Page 1

1. Basis of test realization:

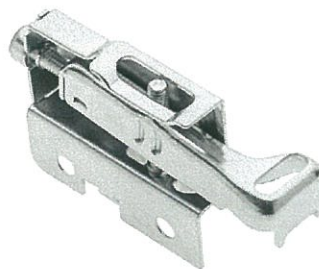
- the order from the firm GTV, ul. Przejazdowa 21, 05-800 Pruszków

2. Standard according to which test was conducted:

- EN 15939:2011+A1:2014 Hardware for furniture – Strength and loading capacity of wall attachment devices

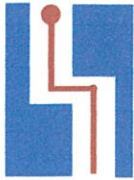
3. Article tested

Kitchen hanger STRONG ZK-STRONG-L1, ZK-STRONG-P1



Article tested

INŻYNIERSKI OŚRODEK
KSZTAŁTOWANIA JAKOŚCI WYROBÓW
„ATEST” Spółka z o.o.
60-214 Poznań, ul. Bogusławskiego 16
tel./fax 61 865-26-89
NIP 779-206-14-74, Regon 630681995



4. Description of the preformed tests

The tests were conducted with the attachment devices mounted to the side of testing cabinet, to which a type A test frame was attached. Two wood screws 4 x 30 mm were used to mount the tested attachments to the cabinet. Procedure No 2 according to 6.1 EN 15939:2011+A1:2014/.

5. Verification of loading capacity according EN 15939 + A1:2014

Point of standard EN 15939:2011+A1:2014		Parameters of test	Test result
6.2.2	Static load test	force 1820 N, 1 h	<i>pass</i>
6.2.3	Impact test	force 1820 N, steel impact plate according 4.2.4 – impact 2 x 10 times	<i>pass</i>
6.2.4	Door swing test	force 1820 N, masa 30 kg, 2 x10 cycles open and closing	<i>pass</i>
6.2.5	Overload test	mass 260 kg, 168 h	<i>pass</i>

6 . Conclusion: Based on the results of the conducted tests it is stated that the evaluated wall attachment devices comply with the loading capacity requirements for mounting wall cabinets of the following mass: ca 130 kg with two attachment devices, ca 195 kg with three attachment devices, ca 260 kg with four attachment devices.